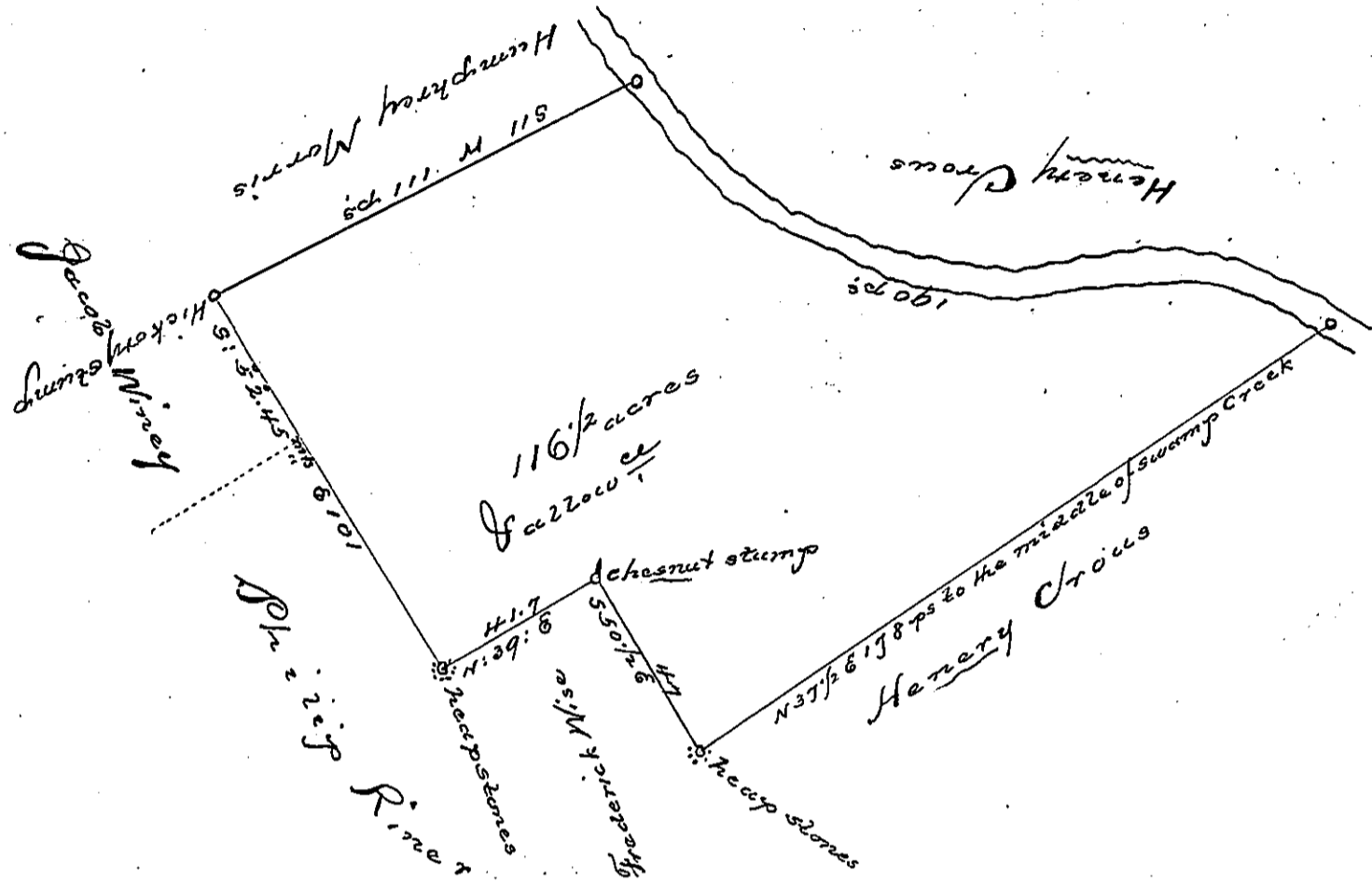


Courses up the Creek called
swamp Creek
N 84 W 50 perches
S 110 W 20
S 72 W 20
West 38
S 87 W 16
N 68 1/2 W 46.7 190.7



In Pursuance of a warrant dated the ninth day of March 1742
Granted to Martin Bittney of the County of Philadelphia for
surveying one hundred acres of land more or less Situate on the Swamp
Creek in the Township of Frederick - now in the County of Montgomery
have according surveyed the same & find it to contain 116 Acres & 1/2
perches, also the usual allowance of six acres per Cent: per
Surveyed the 14th day of June, 1788

p^r Francis Hobson

IN TESTIMONY that the above is a copy of the original remaining on file in the
Department of Internal Affairs of Pennsylvania, made con-
formably to an Act of Assembly approved the 16th day of
February, 1833, I have hereunto set my Hand and caused
the Seal of said Department to be affixed at Harrisburg, this
second day of March, 1897,

James W. Pitta
Secretary of Internal Affairs.